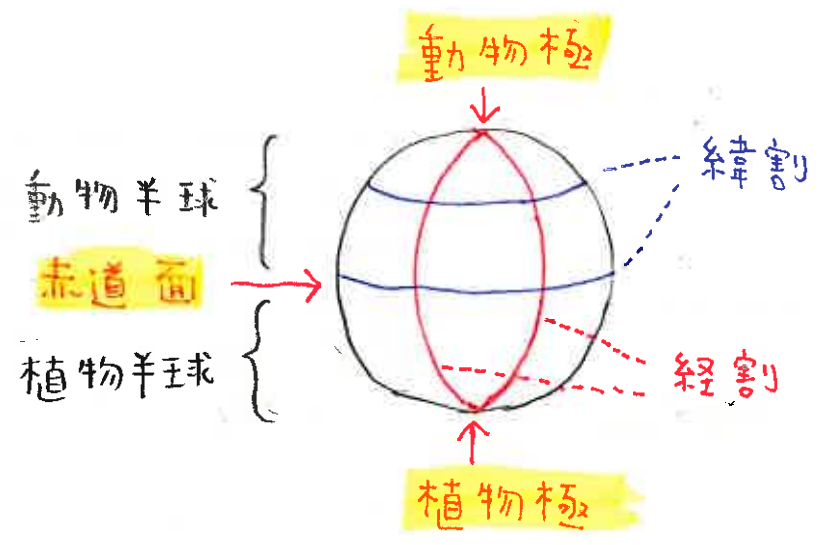
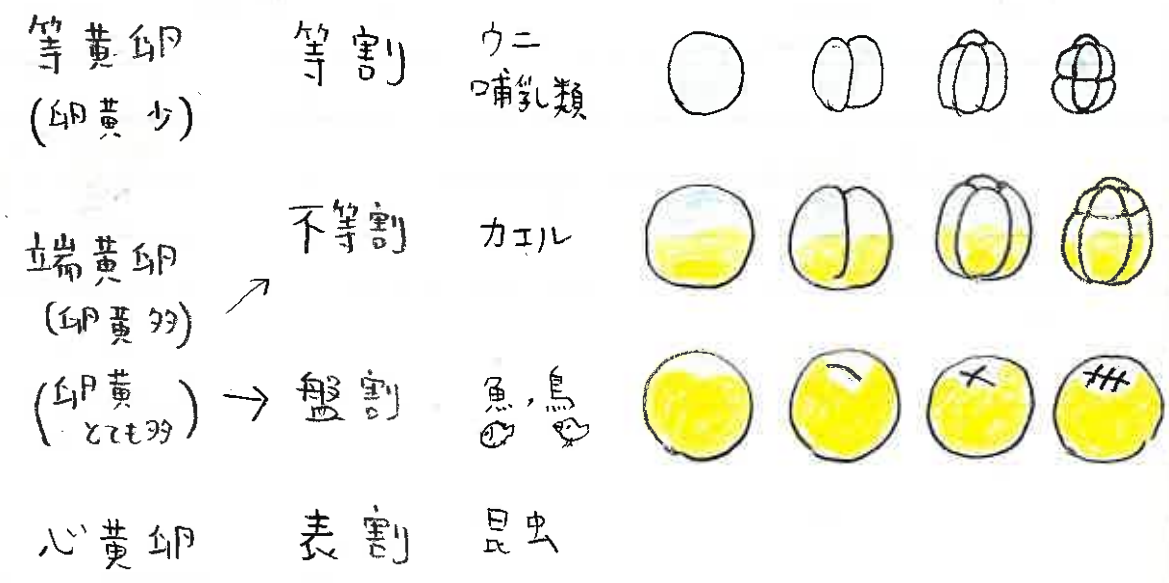


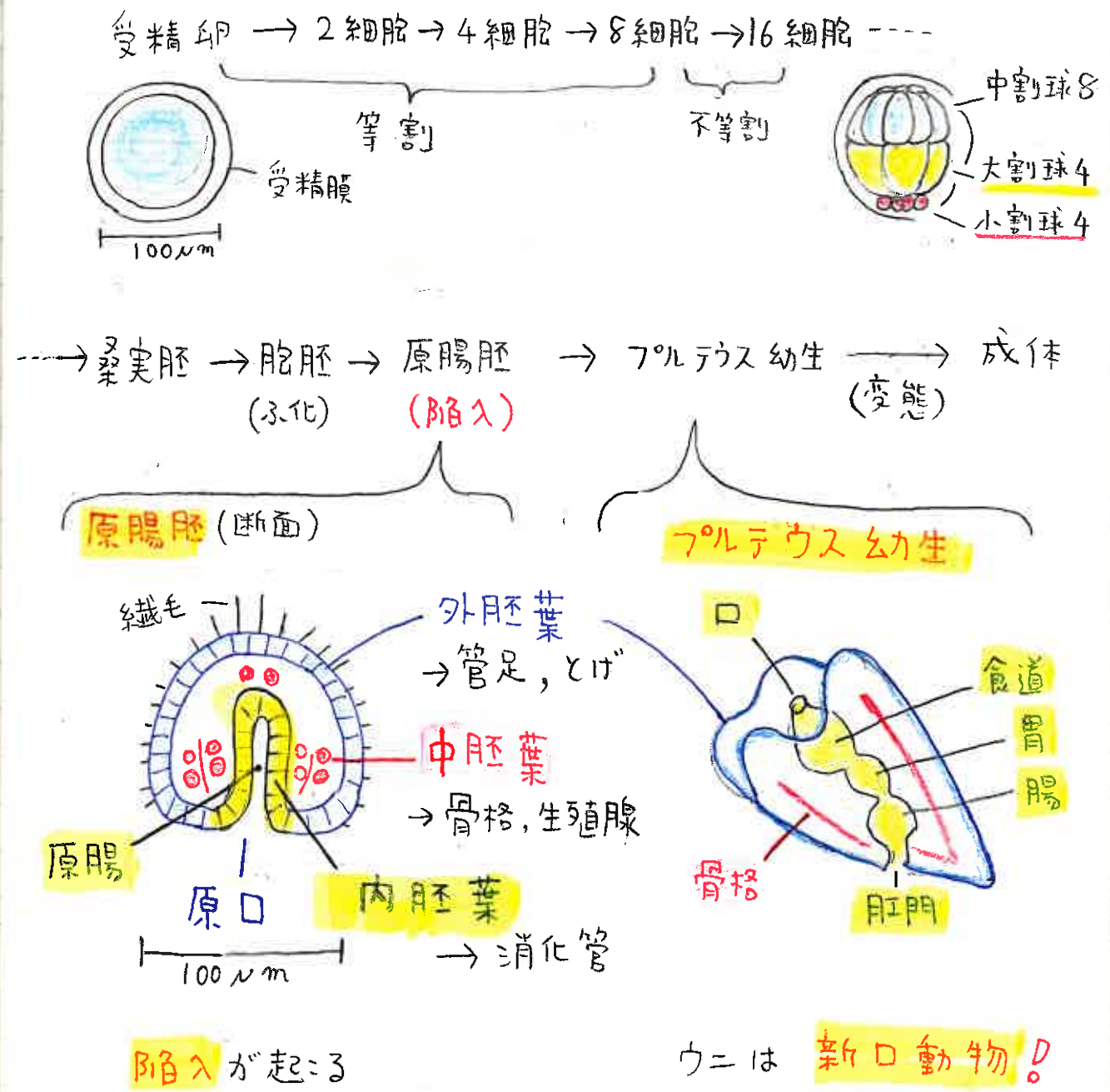
生物下 9 時間目

4-5-1 卵の種類と卵割 (教P175 図P180)

卵割の様式



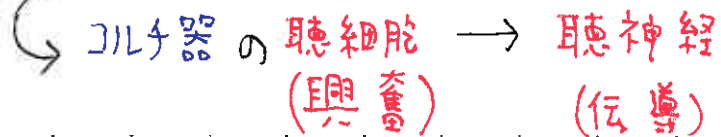
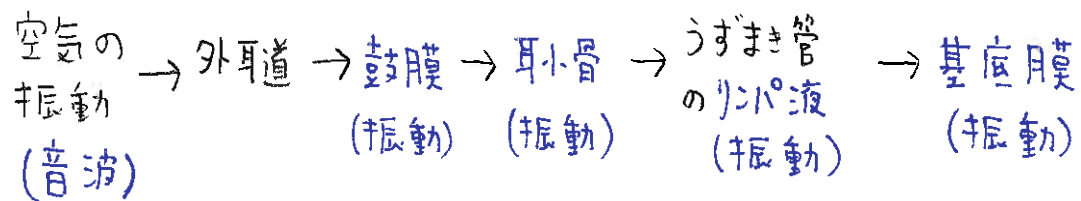
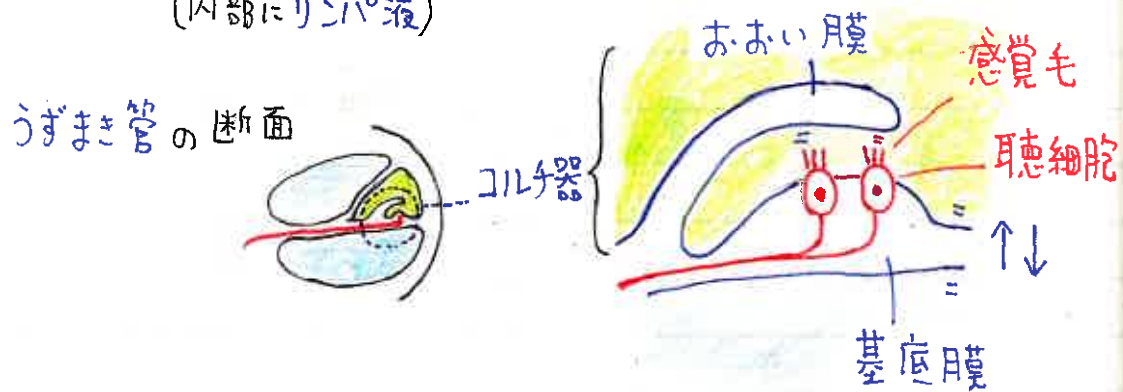
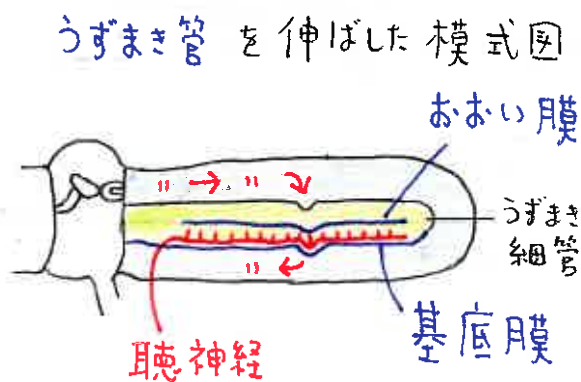
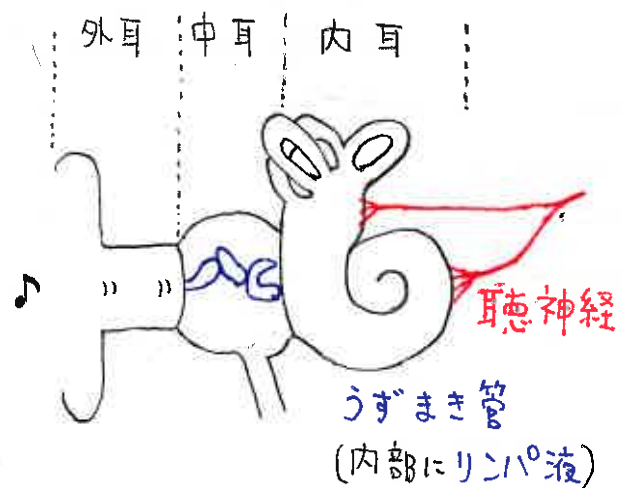
4-5-2 ウニの発生 (教P174, 176~177 図P181~183) 復習



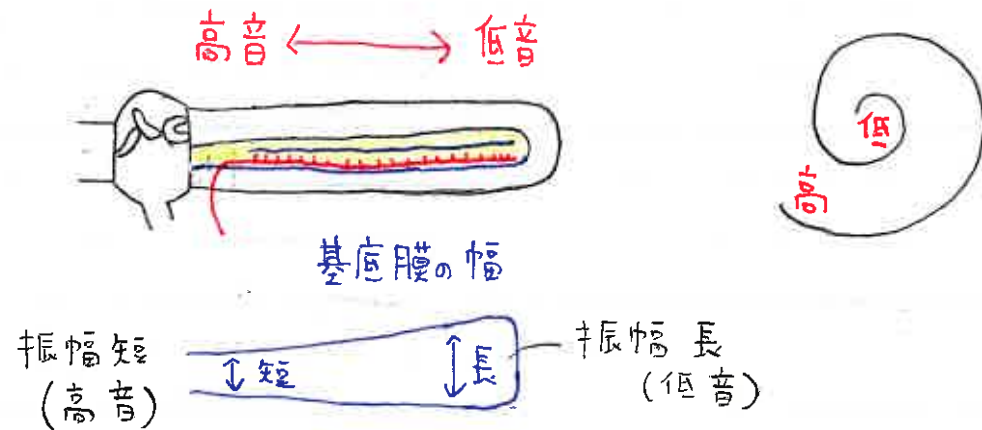
生物特講 9時間目

5-2-3 聴覚器・平衡感覚器 (教P230~231 図P222)

A 聴覚器



B 音の高低の識別



C 平衡受容器

